



FULL-SIZE PATTERNS and ILLUSTRATED INSTRUCTIONS

FOR MAKING A

# Clown Comforter



- a PLATYPUS Pattern -  
published by  
PLATYPUS PUBLICATIONS  
New York, N.Y.  
© Colette Wolff - 1968

Our CLOWN COMFORTER is a security blanket with another name, waiting to be claimed by your favorite toddler. It's easy and economical to make using scraps left over from other projects. Choose bright colors and lively prints for the quilt top. Find something fuzzy for the lining. Sew it sturdy, anticipating the hugging and the tugging it will get. Washable fabrics only, please!

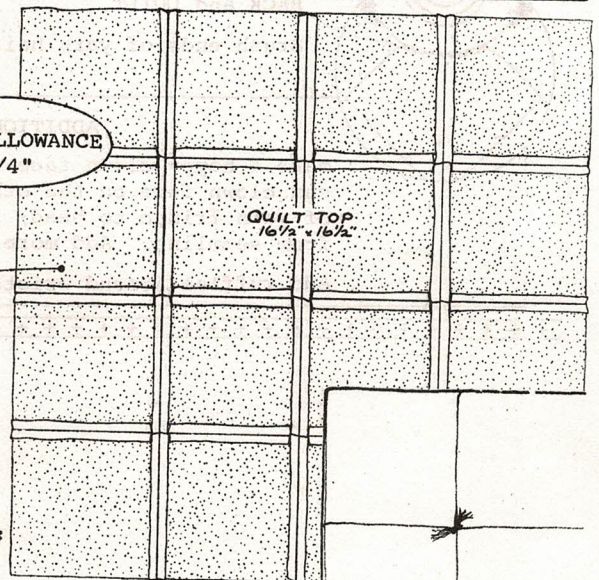
You'll need:

- ass't prints and plains, cotton scraps (pieced top)
- 2 - 16½" x 16½" pieces of polyester batting
- 16½" x 16½" piece of fabric (lining)
- matching sewing thread
- embroidery floss (quilt ties, mouthline, neck)
- 4-ply acrylic yarn (hair)
- 16" x 12" white cotton or polyester fleece (hands and head)
- polyester stuffing
- red, pink, black iron-on fabric (features)

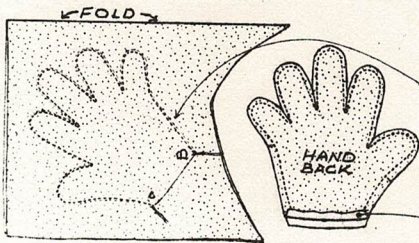
1. Cut 16 4½" x 4½" squares from harmonizing prints and plains. With right sides facing, machine-stitch squares together into 4 rows of 4 squares each. Machine-stitch rows together, matching previous seamlines, making a pieced TOP 16½" x 16½". Press.
2. Stack 2 BATTING squares over wrong side of TOP; machine-baste, stitching just outside ¼" seam allowance. Trim BATTING from seam allowance. With right sides together, machine-stitch LINING to TOP/BATTING, leaving 6" opening centered on one side. Turn right side out. Ladderstitch opening closed.

SEAM ALLOWANCE  
1/4"

QUILT TOP  
16½" x 16½"



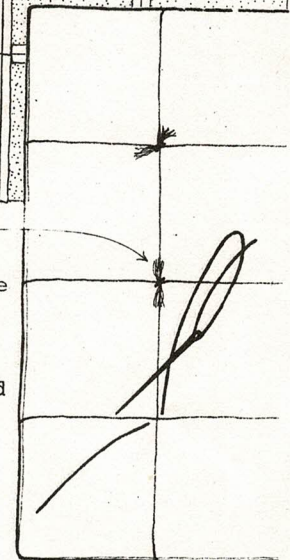
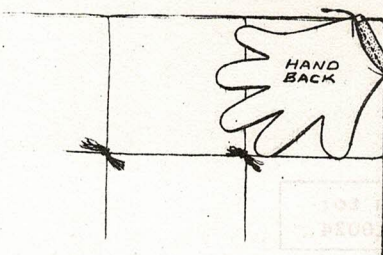
Using embroidery floss threaded into a needle, tie all layers together where piecing seams cross (9 intersections): push needle down through all layers and back up 3/16" away; tie securely before trimming floss 1/2" from knot.



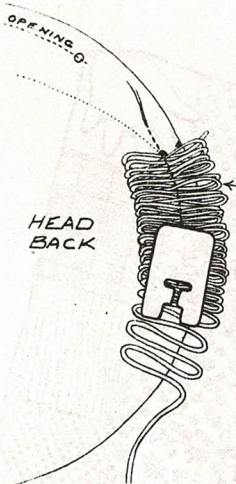
3. Trace outlines of HAND twice onto white fabric 10" x 12", folded to 10" x 6". Allow enough space between HAND outlines for seam allowances. Following pencilled outlines, machine-stitch from A to B, leaving open across wrist; doublestitch. Cut out 1/4" outside seam, tapering to 1/8" around fingers. Clip seam allowances at inside curves and between fingers. Turn back and press wrist seam allowances on BACK of each HAND.

Turn right side out. Machine-stitch FRONT wrist of each HAND to opposite corners of QUILT TOP (both thumbs up); match A and B to QUILT edges; stitch through all layers, leaving BACK of each HAND unattached.

Stuff each HAND, filling fingers first, padding palms softly. Turn HANDS out, pushing corner of QUILT inside HAND; blindstitch BACK wrist of each HAND to QUILT LINING.

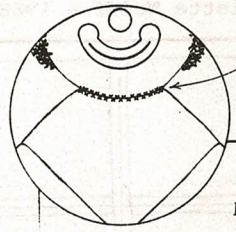


(over)



4. Trace HEAD outline twice onto white fabric 6" x 12"; cut out. On wrong side of HEAD FRONT and BACK, mark seamline, ▼'s and o's. On right side of FRONT, trace outlines of features; on right side of BACK, mark hairline and ●'s. Staystitch on seamline between o's indicating opening for stuffing.
5. Looping yarn back and forth in front of needle, machine-stitch fringe of yarn just inside seamline between ●'s around HEAD BACK, making loops on either side of seam about 1/2" long. Doublestitch. Cut loops. Looping yarn in same manner, stitch 2nd row of yarn fringe to HEAD BACK 5/8" inside 1st row, beginning and ending at hairline. Doublestitch; cut loops. Continue stitching yarn fringe to HEAD BACK until it is covered with yarn above hairline. Increase length of yarn loops with every row, making loops at center back about 1" long.
6. Trace and cut out mouth from red iron-on fabric, nose from pink iron-on fabric, eyes and eyebrows from black iron-on fabric. Fuse cut-outs to HEAD FRONT where outlined. Pencil mouth line within mouth; embroider with chain stitching using 3 strands of black floss. With doubled white sewing thread, make eye highlights with single stitches.

7. With right sides together, machine-stitch HEAD FRONT to HEAD BACK from o to o, matching all ▼'s, pushing yarn away from seamline as stitching progresses. Doublestitch. Turn right side out.
8. Insert corner of QUILT into neck opening of HEAD. Turning neck seam allowance inside, blindstitch HEAD BACK to LINING, stitching through all layers. Stuff HEAD until plump. Turning neck seam allowance inside, blindstitch HEAD FRONT to QUILT TOP, adding more stuffing before closing opening.

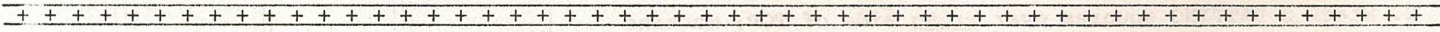


Herringbone stitch over seam between HEAD FRONT and BACK and QUILT.  
Brush ends of yarn hair to untwist.

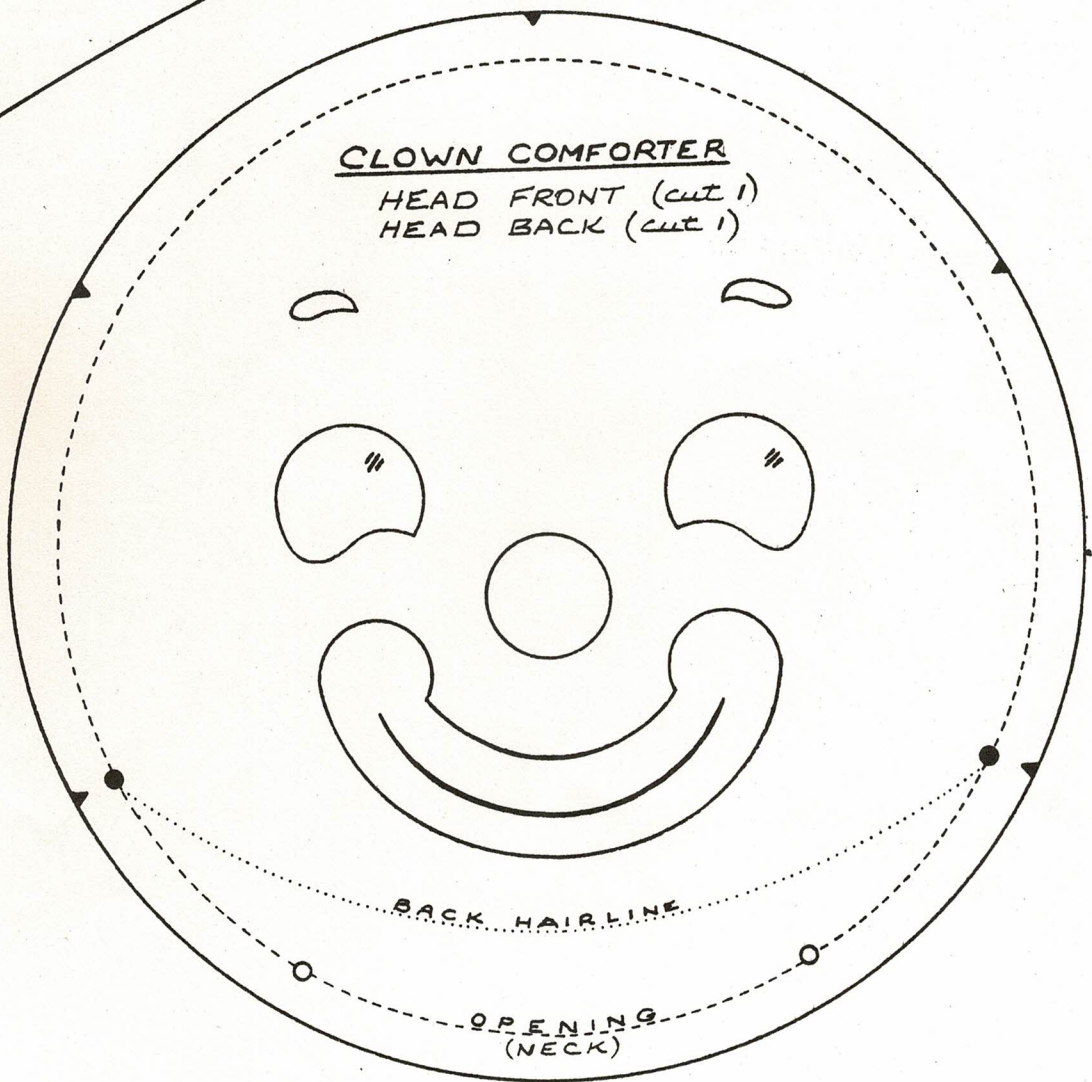
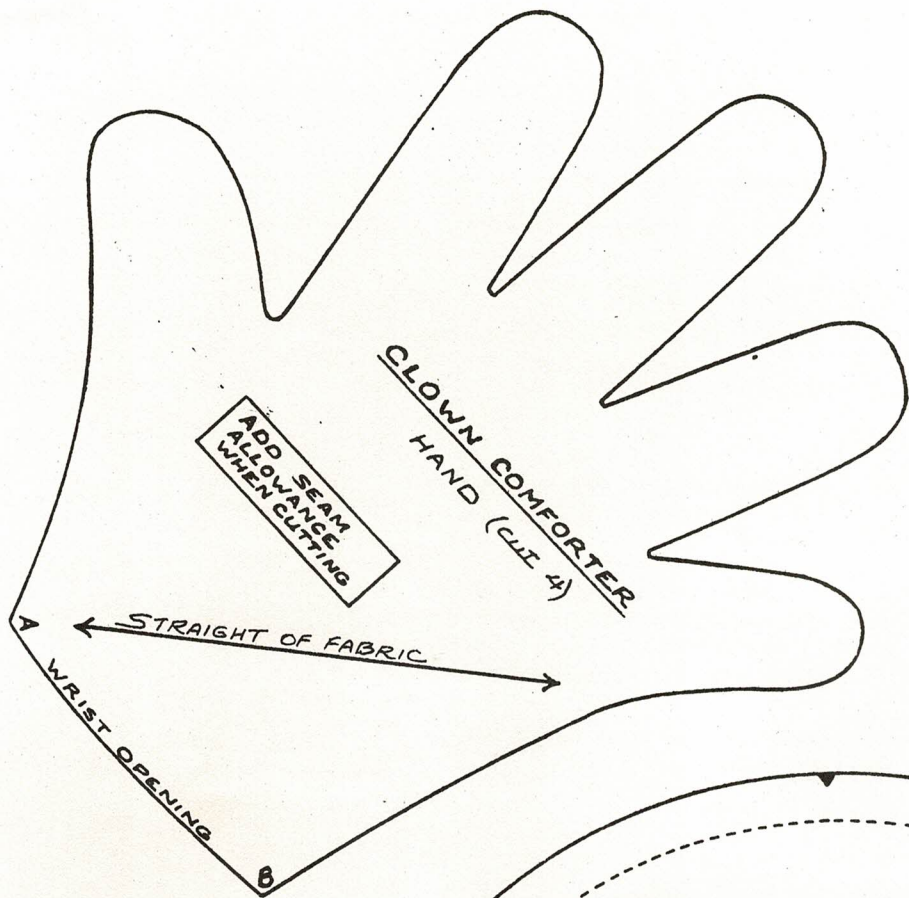


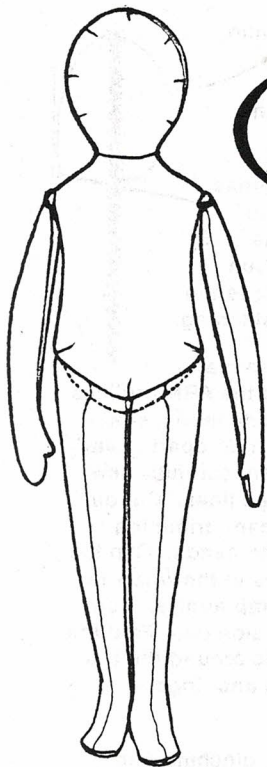
**ADDITIONAL SUGGESTIONS**

Make a happy clown face on one side of the head. Make a sad clown face on the other side of the head. Stitch 2 rows of yarn fringe to head; 1 to front 1/4" from seamline, 1 to back 1/4" from seamline. Add more handstitched yarn loops to head after stuffing as needed.  
Add ruffles around wrists and neck.



For information about other PLATYPUS patterns, write to:  
PLATYPUS, Box 396, Planetarium Station, New York, NY 10024.





## A CHALLENGE DOLL

The name is up to you—even the gender. Make the PLATYPUS Challenge Doll using our patterns and following the directions on these pages. The head and torso of our 18" doll are shaped with darts, the arms and legs swing from seam-jointed shoulders and hip, and the unstuffed hinges at the top of each leg enable sitting. That's where these instructions stop. You take over from there, developing the blank figure into the doll-person you visualize in your imagination. Apply facial features using the medium of your choice (you might want to experiment on paper first). Build and style a wig from yarn or any other material that suits the doll-character you're bringing into focus. Costume with garments that continue the portrayal. When you've finished, your doll-person will name itself.

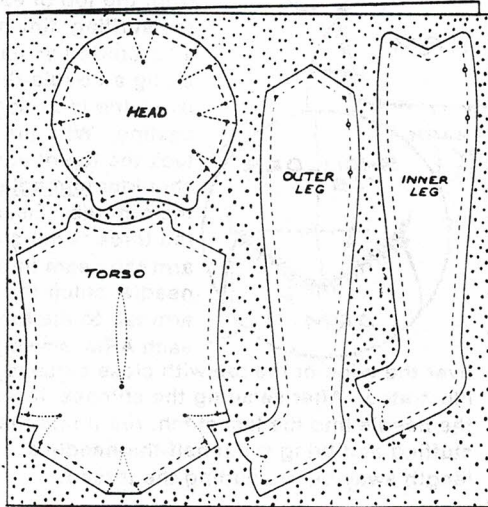
To make a CHALLENGE DOLL, you'll need:

- 13" x 34" of 100% cotton unbleached muslin or other 100% cotton flesh-colored fabric
- sharp pencil suitable for fabric marking
- polyester fiberfill stuffing
- matching sewing thread and button-and-carpet extra strong thread

1. Photocopy or trace a set of working patterns and cut out.

For the best results, duplicate the lines on the patterns exactly when tracing, cutting, and sewing.

2. Using a pin-sharp pencil, trace the outlines of the HEAD, TORSO, OUTER and INNER LEGS onto doubled fabric. Pin the fabric layers together inside the outlines and cut out. Mark each pattern piece with dart seamlines, ●'s and ○'s. Trace the outside seamlines onto one of each pair that will be sewn together.



DOUBLED BODY FABRIC

Set the stitch regulator on your sewing machine to sew very small stitches. Adjust the tension to produce a firm, tight seam.

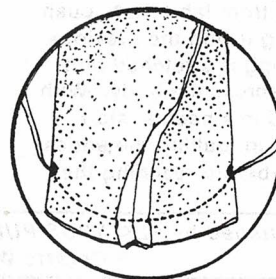
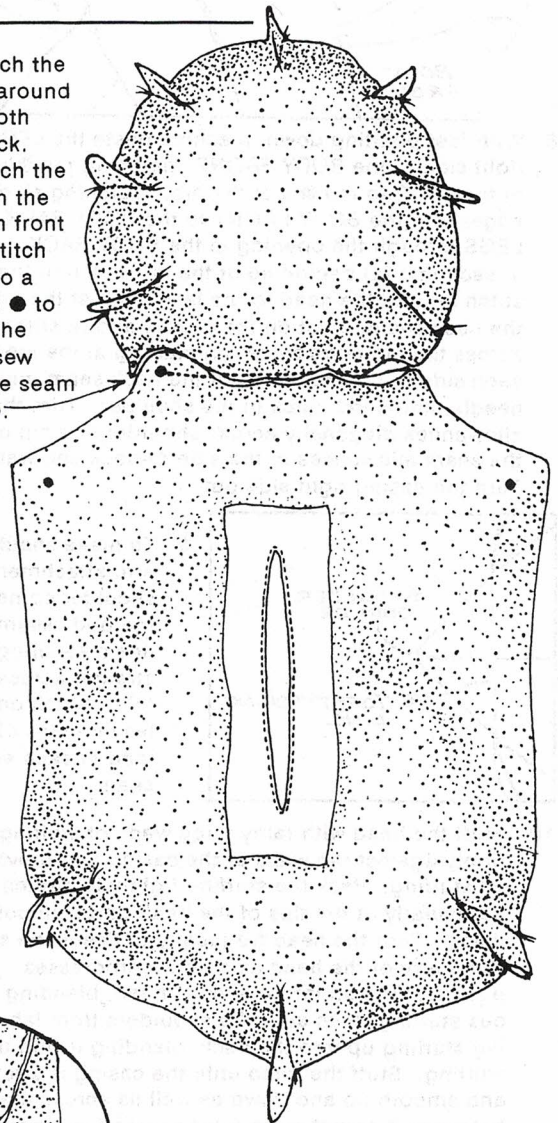
Unless directed otherwise, two pieces are seamed together with the right sides of the fabric facing inside. Match the cut edges to be joined plus any ● indications. Sew slowly, smoothly, and accurately over the seamlines marked on the patterns. **Seam allowance - 1/4"**.

Where seams start and/or stop within the fabric rather than off the edge of the fabric, backstitch or tie off the threads to prevent the stitches from unravelling.

3. From a scrap of body fabric, cut a facing 3 1/2" x 1 1/2". Pin the facing to the right side of the BACK, centering it over the opening for stuffing. Stitch around the opening as indicated on the pattern. Slash between the ○'s, turn the facing to the inside, and edgestitch as illustrated above.

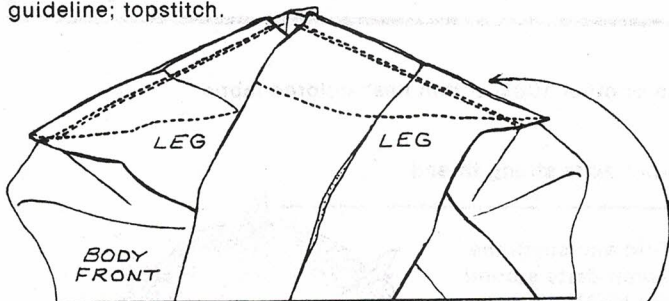
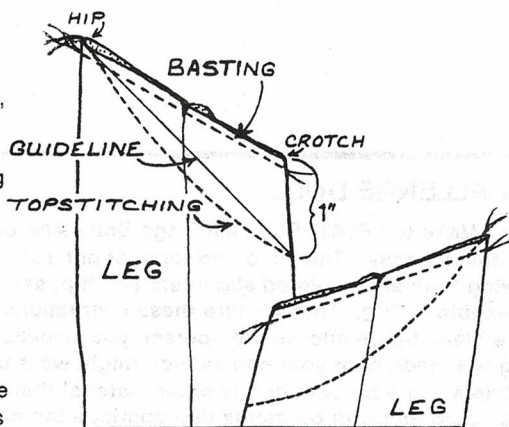
4. Fold and stitch the seven darts around the HEAD, both front and back. Fold and stitch the three darts in the TORSO, both front and back. Stitch each HEAD to a TORSO from ● to ●, pivot on the needle and sew back over the seam to the first ●.

5. Stitch each INNER LEG to OUTER LEG in front and back, leaving tops and toes open and allowing an opening for stuffing between the ○'s in back. Double-stitch over the front ankle curves.

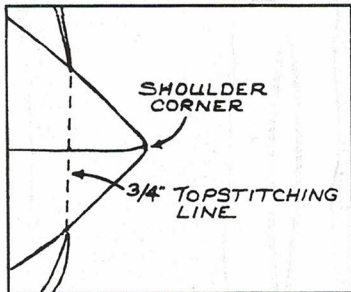


6. Refold each toe with seams centered and stitch across from ● to ●. Trim the toe seam allowances 1/8"; clip the seam allowances at front and back ankle curves. Turn each LEG right side out.

7. Centering the front and back seams and matching edges, close the top of each LEG with machine-basting 1/8" from the edge. On each LEG, pencil a guideline that angles down from the hip point to a position 1" below the crotch point. As illustrated, draw a topstitching line that curves away from the guideline; topstitch.



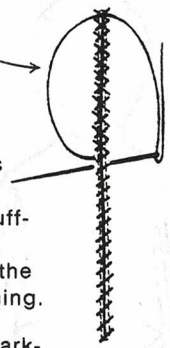
8. With feet pointing down, machine-baste the LEGS to the right side of the BODY FRONT, matching the ●'s at the top of the LEGS to the ●'s at the hip. Matching all darts and edges, pin the BODY FRONT to the BODY BACK, pulling the LEGS through the opening in the BODY BACK. Sew together in sections: (a) beginning at the last stitch of the neck seam, stitch around the head to the last stitch at the other end of the neck seam, pivot on the needle and re-stitch; (b) sew across the hip edge twice; (c) starting at the hip, sew up each side to the last stitch of the neck seam, pivot on the needle, and stitch back to the shoulder. Trim the seam allowances diagonally across shoulder and hip corners; clip the seam allowances at the side-of-neck and waist curves. Turn the casing right side out.



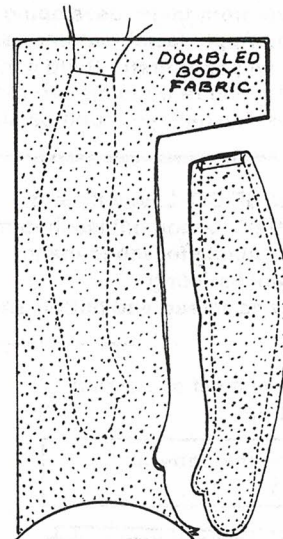
9. To make shoulder tabs for arm attachment, fold each shoulder corner to center the body seam. Pencil a line measuring 3/4" straight across from fold to fold. Stitch on that line, leaving tails of thread 5" long at each end of the seam.

10. Stuff the head with fairly large wads of stuffing pushed firmly against the walls of the casing and previously inserted stuffing. Pack the stuffing tightly to stretch the fabric, particularly at the tips of the head darts, smoothly over the filling. Turn the head frequently to check the shaping and symmetry of the head as stuffing progresses. At the neck, push stuffing up into the lower head, blending it with previous stuffing; then stuff the shoulders from tab to tab, pushing stuffing up into the neck, blending it with the previous stuffing. Stuff the torso until the casing is stretched taut and smooth up and down as well as across the body. With button-and-carpet extra strong thread in a needle, start closing the opening from the bottom up, pulling the edges together with overcast stitches. Just before reaching the

top, insert more stuffing as needed. Resume stitching to the top, then cross-stitch back over the original stitches. Finish by finger modelling to perfect the final shaping of the figure.

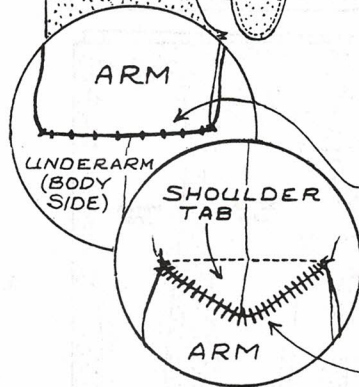


11. Stuff the feet, pinching and pressing toe areas flat. Stuff each LEG stiffly all the way up to the outside tip below the hip, softening the stuffing slightly on the inside below the unstuffed hinge. Using a single-threaded needle, close the openings with tiny overcasting or ladder stitching.



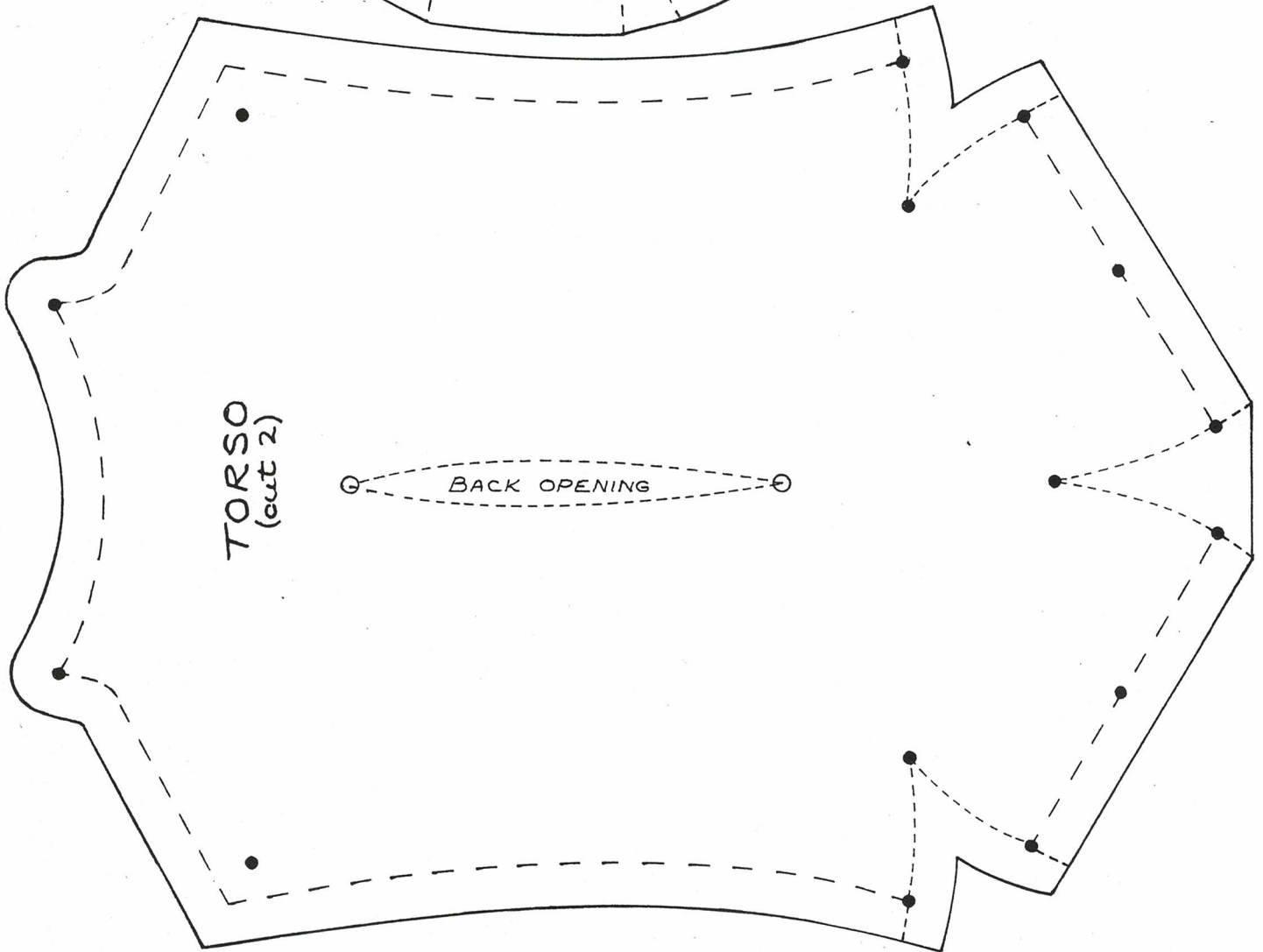
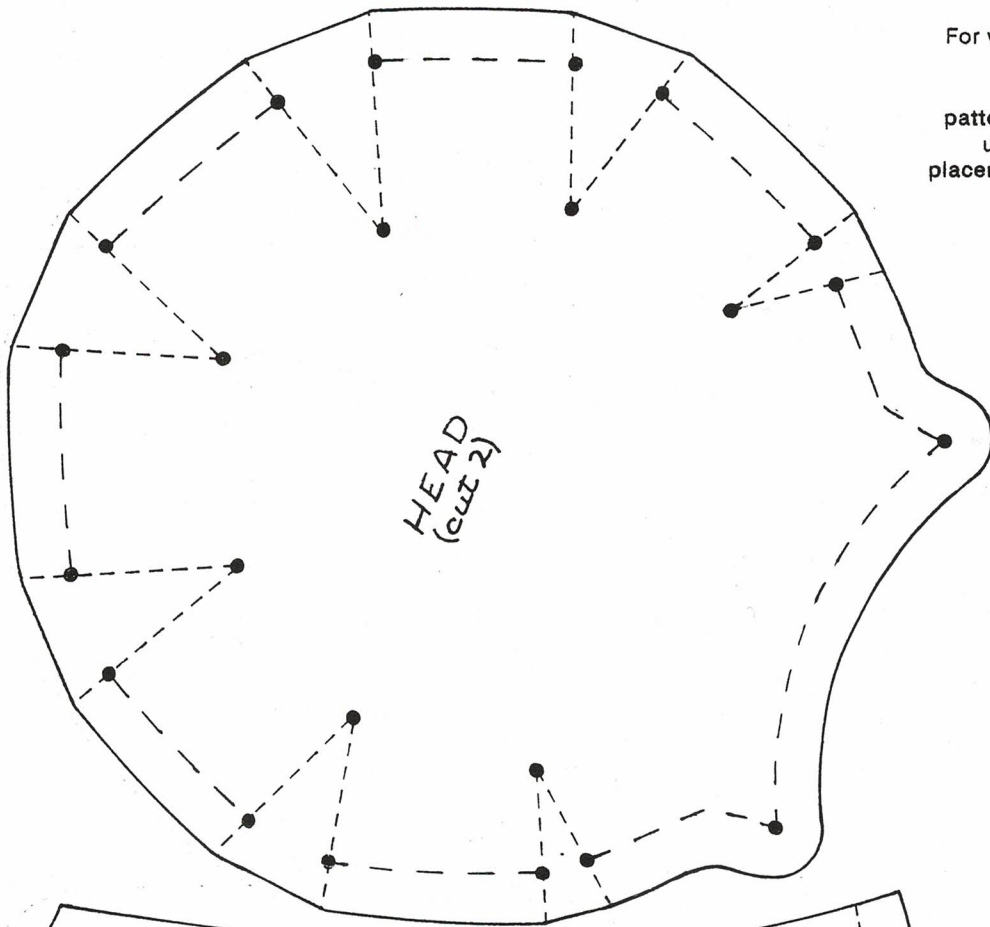
12. Using a pin-sharp marking pencil, trace the ARM outlines onto doubled body fabric, spacing the outlines 1/2" apart. Leaving the tops open, carefully sew over the pencilled lines. Cut out 1/8" from the seam, trimming closer around the hands. Clip the seam allowances at the wrists in front and at thumb angles. Turn each ARM right side out. Fold the seam allowances around the top openings inside and finger-crease.

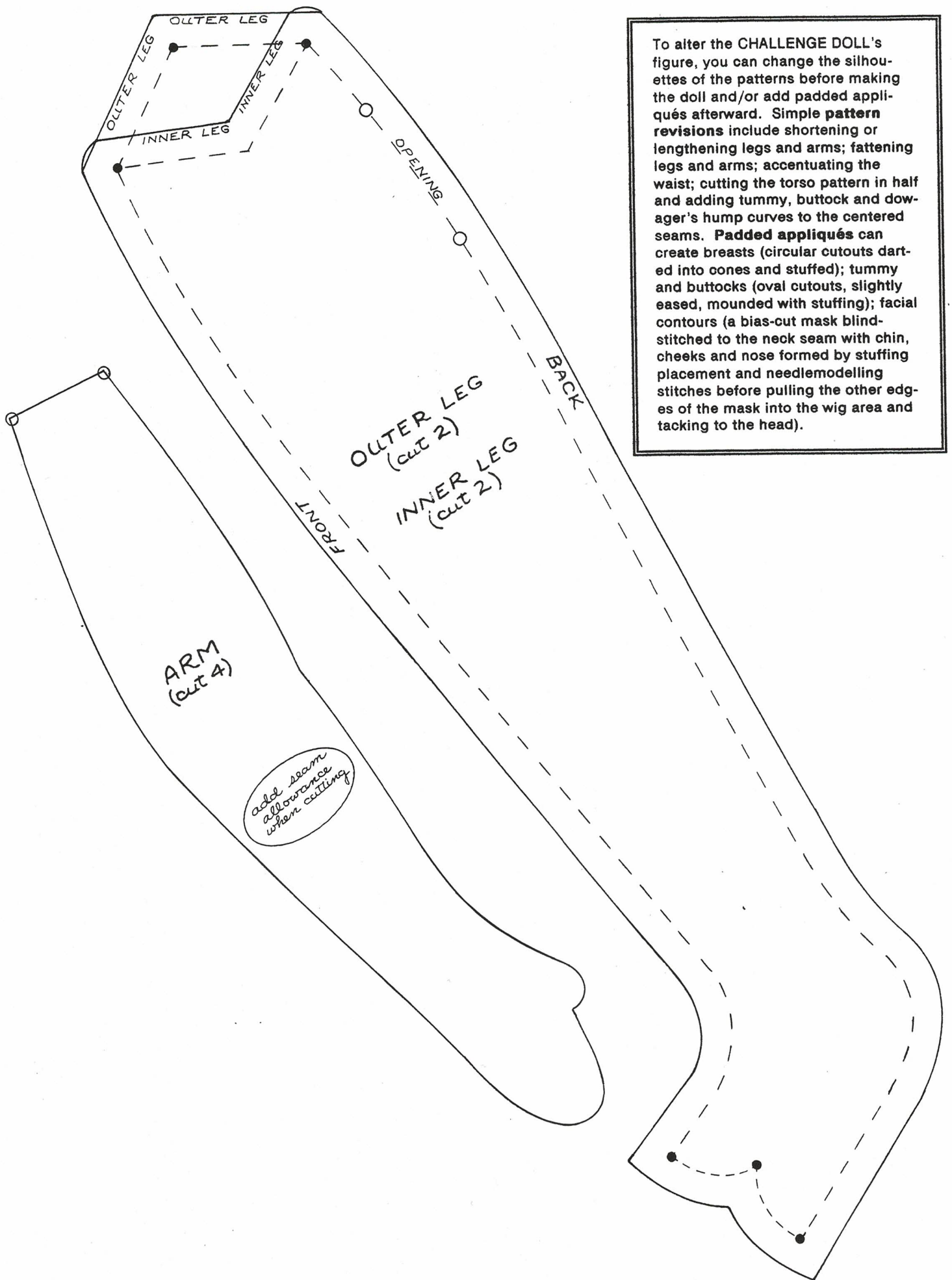
13. Stuff the hands, pinching and pressing flat. Build up to roundness at the wrists and continue stuffing the ARMS firmly. 1-1/2" from the top of each ARM, soften the stuffing, finishing with the last 1/2" stuffed as flat as the hands. Using a double-threaded needle, close the top openings with overcasting. With the same thread, tack the top of each ARM to the shoulder immediately underneath the arm tab. Inserting the ends of the threads dangling from the arm tab seam into a needle, stitch the arm tab to the top of each ARM, sewing over the edge of the tab with close stitches as illustrated. After securing the stitches, insert the needle into the last stitch, run it into the stuffing and bring it out half-the-needle's length away before cutting the thread.



NOTES

For working patterns, photo-  
copy or trace these  
**CHALLENGE DOLL**  
patterns. Leave these sheets  
uncut for reference or re-  
placement of damaged or lost  
working patterns.



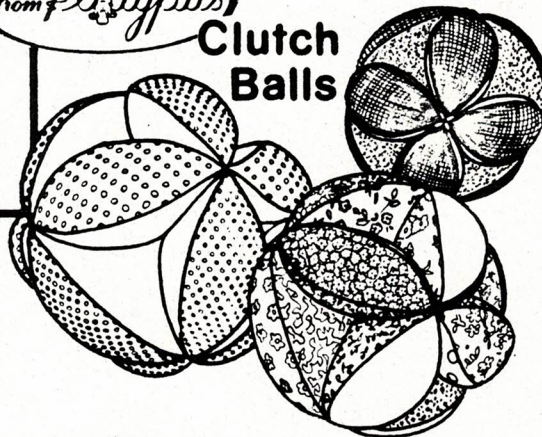


To alter the CHALLENGE DOLL's figure, you can change the silhouettes of the patterns before making the doll and/or add padded appliqués afterward. Simple **pattern revisions** include shortening or lengthening legs and arms; fattening legs and arms; accentuating the waist; cutting the torso pattern in half and adding tummy, buttock and dowager's hump curves to the centered seams. **Padded appliqués** can create breasts (circular cutouts darted into cones and stuffed); tummy and buttocks (oval cutouts, slightly eased, mounded with stuffing); facial contours (a bias-cut mask blind-stitched to the neck seam with chin, cheeks and nose formed by stuffing placement and needlemodelling stitches before pulling the other edges of the mask into the wig area and tacking to the head).

from *Platypus*

## Clutch Balls

The clutch ball is a classic baby and toddler toy that's timeless in its appeal. Clutch balls are simple and economical to make. They're colorful. They're easy for little hands to hold, they're fun and safe to toss around, and they're washable. They're genderless and even ageless because adults like to play with them as much as children.

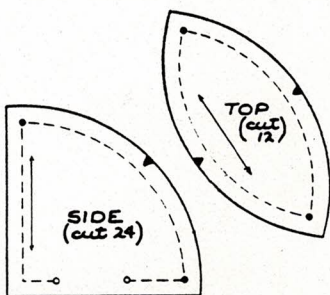


To make one 4", 5", or 6" diameter CLUTCH BALL, you'll need:

- ass't cotton or cotton/polyester prints and solids
- light cardboard or plastic for templates
- sewing thread
- polyester stuffing
- button-and-carpet extra strong thread

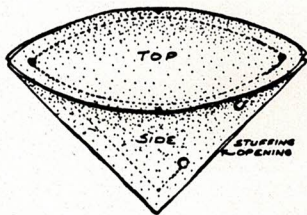
1. Make exact-copy templates of the appropriate patterns.

2. With a pin-sharp pencil tucked against the edge of the pattern piece, trace the outlines of 12 TOPS and 24 SIDES onto the wrong side of the selected fabrics. Cut out on the pencilled outlines. Mark  $\nabla$ 's,  $\bullet$ 's and  $\circ$ 's on the wrong side of all pieces.



Since all seams begin and end within fabric rather than off the edge, begin and end all machine-stitched seams with backstitching or tied-off threads.

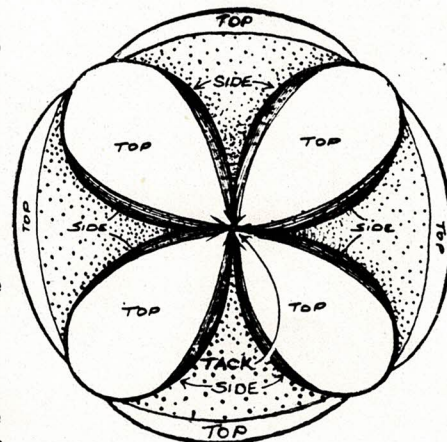
3. With right sides together, curved edges and  $\nabla$ 's matching, machine-stitch a TOP to a SIDE from  $\bullet$  to  $\bullet$ . Machine-stitch another SIDE to the other side of the TOP from  $\bullet$  to  $\bullet$ . Machine-stitch the SIDES together from  $\bullet$ , turning the corner, to the other  $\bullet$ , leaving an opening between the  $\circ$ 's. Trim the corner seam allowances straight across. Turn right side out. Repeat, making 12 ball sections.



4. Stuff each section until moderately firm. Handsew the openings closed with tiny overcast stitching.

5. Run a needle double-threaded with button-and-carpet extra strong thread through the pointed tip of each section. When all 12 sections are strung on the thread, tie the ends of the thread together, pulling it very tight and knotting securely. Trim the thread 1/2" from the knot.

6. Arrange the tops of four sections to meet at the corners as illustrated. With doubled sewing thread in a needle, tack the corners together securely and invisibly. Arrange and tack the corners of four more tops together. Continue until the corners of all tops are connected and stabilized.



When handsewing the stuffed ball sections together, bury thread knots within the stuffing by making a knot small enough to tug through the outer fabric. After securing the tacking stitches, insert the needle into the stuffing at the last stitch, bring it out 1/2" or so away and cut the thread where it emerges.

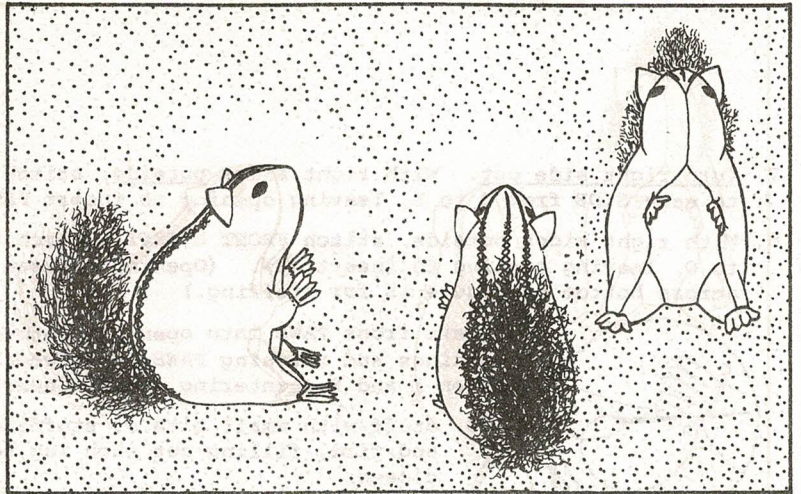
If the tacking threads that fasten the corners of the tops together show unattractively, hide with a cross stitch of decorative thread or yarn. Tie the ends of the thread together in the center of the cross stitch, trim and push the tails down toward the center of the ball.

To commemorate a new baby, embroider the baby's name, date of birth, the names of the parents, the locality, and any other vital statistics on the tops of the sections. At every intersection, add a small bow of satin ribbon and, at one intersection, include a loop for hanging.

As a gift for an adult, make a large clutch ball of unusual fabrics like satins, wools, lace, and metallics, embellished, on the tops of the various sections, with embroidery and beads or painted motifs. Remember a special event with the date, the place, and names of participants written on the tops with fabric markers.



FULL-SIZE PATTERNS  
and ILLUSTRATED INSTRUCTIONS  
for STITCHING AND STUFFING A  
**3½" CHIPMUNK**



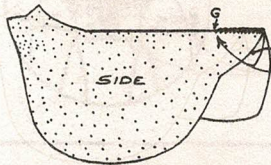
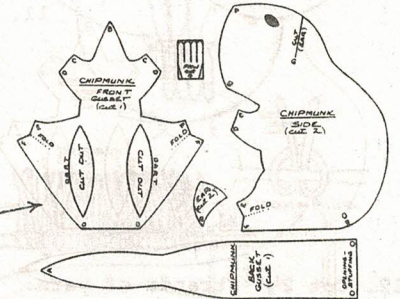
For the best possible result: (1) read and follow the instructions carefully; (2) trace and cut exact fabric duplicates of the paper patterns; (3) hand-stitch smoothly and evenly; and (4) pack the body firmly with stuffing.

Handsew all seams, overcasting edges together with closely-spaced stitches 1/8" deep.



You'll need:  
good-quality brown felt (body)  
scrap of brown leather or vinyl (paws)  
matching sewing thread  
polyester stuffing  
blue and off-white embroidery floss  
1 - 6" pipe cleaner  
4-ply brown yarn, wool or orlon

1. With felt-tip pen or sharp pencil, trace outlines of paper pattern pieces onto felt and brown leather or vinyl. Cut out all pattern pieces one at a time, using fingernail scissors for delicate contours.



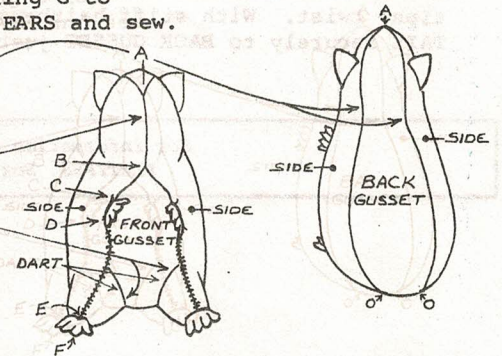
2. Insert EARS into slits cut into SIDES, matching G to G. With right sides facing, fold sides over EARS and sew.

3. With right sides facing (EARS inside and pushed away from seamline), stitch BACK GUSSET to each SIDE from A at nose to O.

4. With right sides facing, stitch SIDES together from A at nose to B under chin.

5. Folding with right sides inside, stitch darts into FRONT GUSSET.

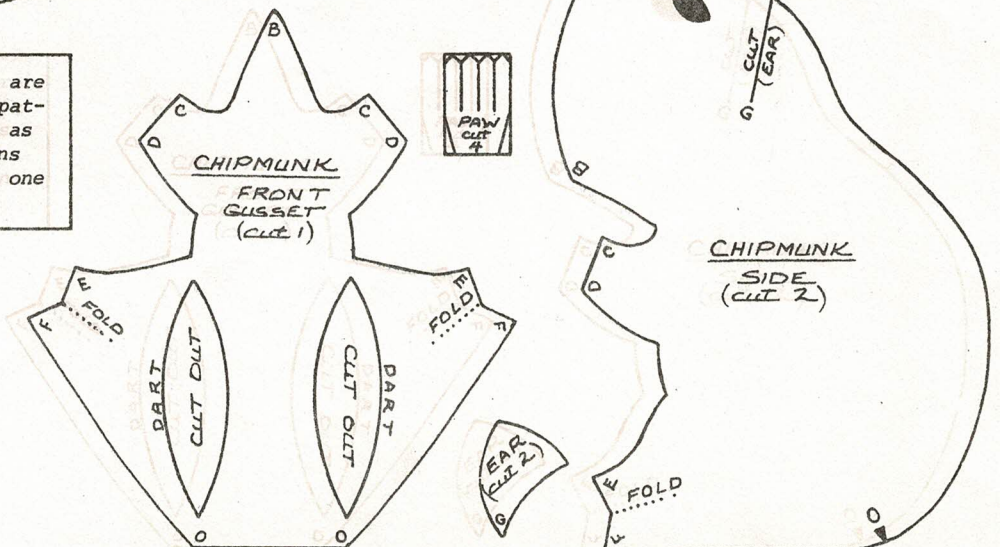
6. With right sides facing, stitch FRONT GUSSET to each SIDE from B to C.



(over)

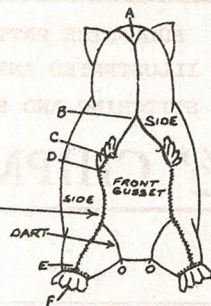


Because patterns as small as these are easily lost, make tracings of the patterns printed on this sheet to use as working patterns. Keep the patterns on this page for reference in case one of your traced patterns gets lost.

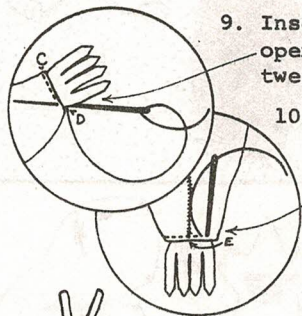


published by  
PLATYPUS PUBLICATIONS  
New York, N. Y.  
© 1983 - Colette Wolff

7. Turn right side out. With right sides outside, stitch FRONT GUSSET to each SIDE from D to E, leaving opening to insert PAW.
8. With right sides outside, stitch FRONT GUSSET to each SIDE from F to O, leaving opening to insert PAW. (Opening between O and O across bottom of figure is for stuffing.)



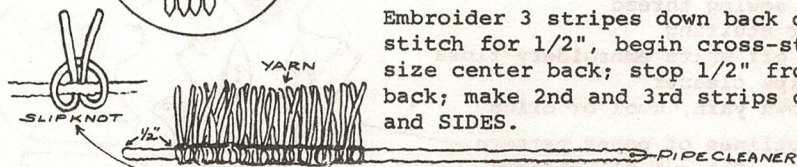
9. Insert front PAWS into openings between C and D. Stabstitch, closing openings and catching PAWS in between. Fold each back paw opening between E and F, centering seams; insert PAWS; stabstitch.



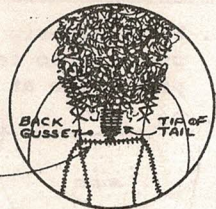
10. Stuff with small bits of stuffing until figure is plump, rounded and firm, filling out each leg to the corners. Handsew opening closed.

11. Satin-stitch each EYE with needle threaded with single strand of blue embroidery floss. Surround each EYE with off-white outline-stitching (single strand).

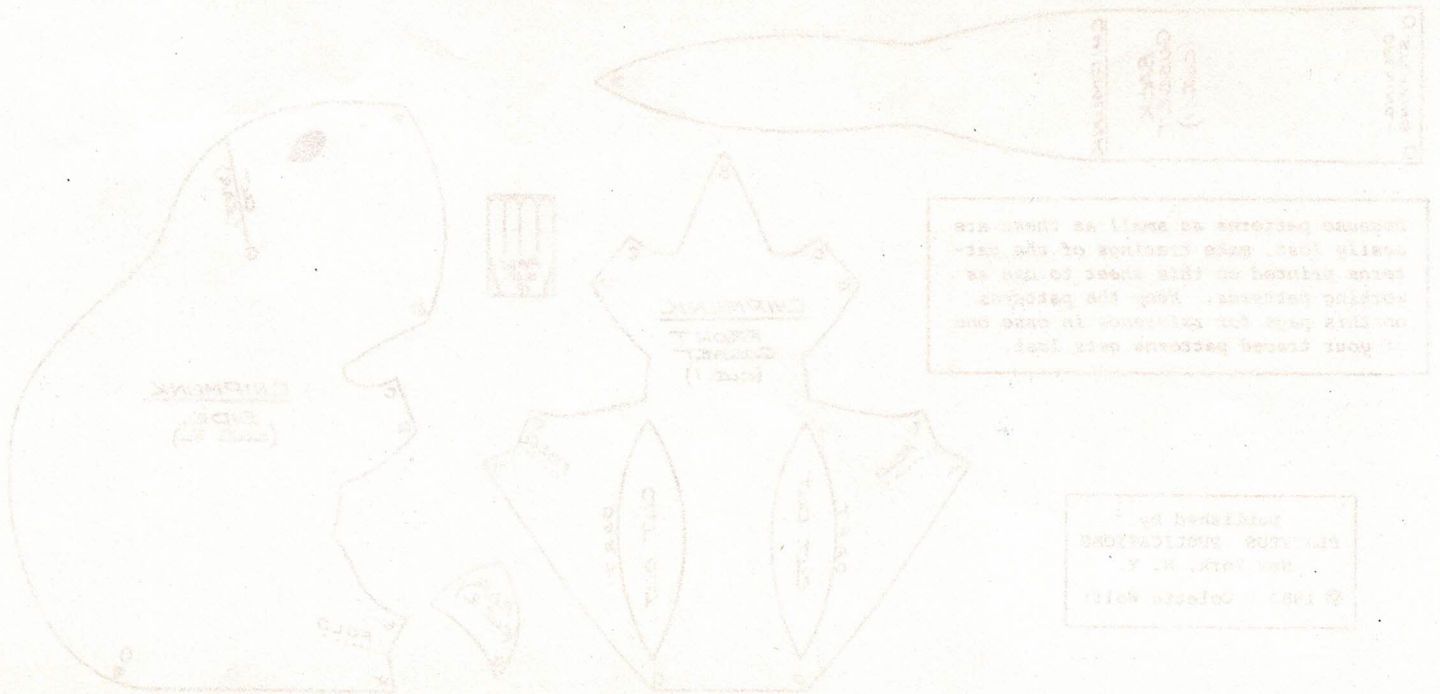
Embroider 3 stripes down back of body: starting 1/4" from tip of nose, chain-stitch for 1/2", begin cross-stitching, starting very small, increasing in size center back; stop 1/2" from closing seam. Make first stripe down center back; make 2nd and 3rd strips on either side, over seams between BACK GUSSET and SIDES.



12. Cut 2 1/2" strands of yarn. Slip-knot strands of yarn around 6" pipe cleaner until all but 1/2" at each end is covered with yarn. Fold pipe cleaner in center, matching tips; twist. With stiff hairbrush, brush yarn strands to separate fibers. Tack TAIL securely to BACK GUSSET just above closing seam.

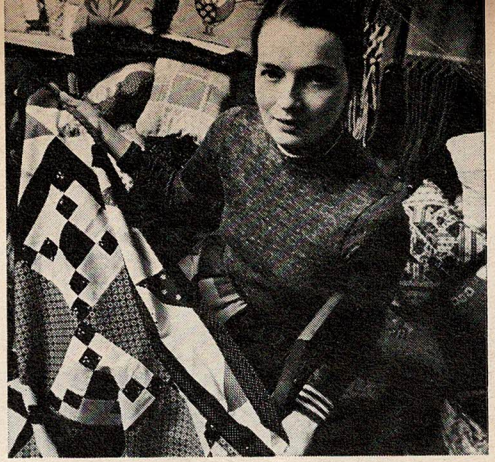


For information about other PLATYPUS patterns and kits, write to:  
 PLATYPUS, Box 396, Planetarium Station, New York, NY 10024.





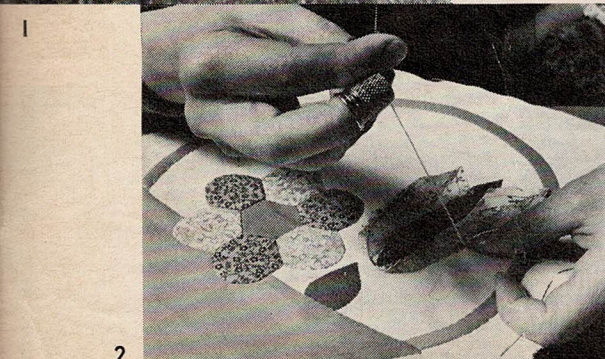
WANT TO  
WARM YOUR HOME  
WITH COMFORTING  
CRAFTS? HERE'S  
COLETTE WOLFF,  
QUILTING AND  
APPLIQUÉ  
TEACHER, TO SHOW  
YOU HOW.



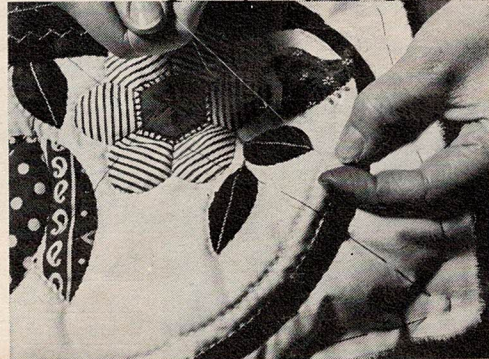
# STITCH ALONG



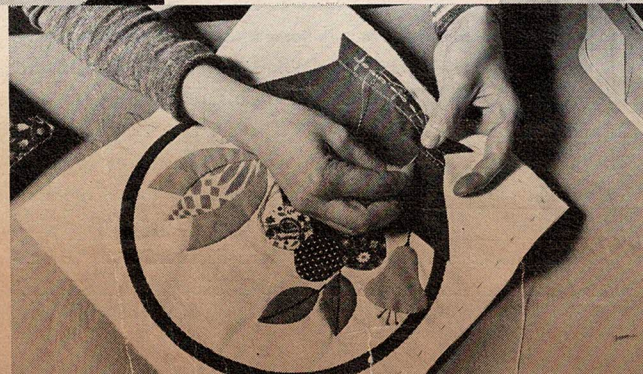
Doing appliqué, or sewing small pieces of fabric to form a design on a larger fabric, is a delightful way to dress up a quilt or pillow. Here's how. **1** Draw your own design or use this "Flower Basket" from Ms. Wolff's instruction booklet (see below). Cut out pattern pieces on heavy paper. Arrange them on your background fabric square, outlining the design in pencil. Trace pattern pieces on the right sides of fabrics. Cut each  $\frac{1}{4}$ " outside of pencil lines, making a seam allowance to tuck under when you appliqué. **2** Sew small pieces together to form one shape (such as petals to make a flower). Press. Pin pieces to shapes traced on the block. Sew, turning under seams to pencil lines. Make tiny running stitches close together, all around each piece. When sewing a curved piece, stretch fabric until it lies flat and stitch the outside or bigger curve first, the inside curve next. **3** Embroider the basket, or any similar, plain shape for eye-appeal. Press block. **4** Follow quilting steps 6 to 9, opposite page. **5** Remove basting stitches.



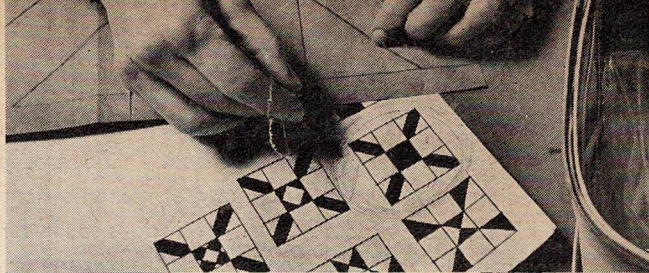
Get the appliqué and quilt patterns shown here in the "Special Patchwork Instructions for Bride's Magazine Readers," \$1.50 ppd. Write to Colette Wolff, 200 W. 82 St., N.Y., N.Y. 10024. Photos here taken at the Performers Outlet, N.Y.C.



2  
HARRY HARTMAN

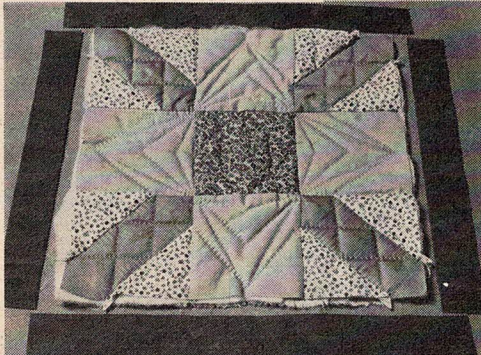


- ◆ Appliqué with double thread.
- ◆ Use fabrics of different textures and designs for extra dimension.
- ◆ Cut notches in curved fabric pieces to get smooth shapes.
- ◆ Quilt closely around appliqué to make them stand out.
- ◆ Save fabric scraps—no matter how small—for other appliquéing.

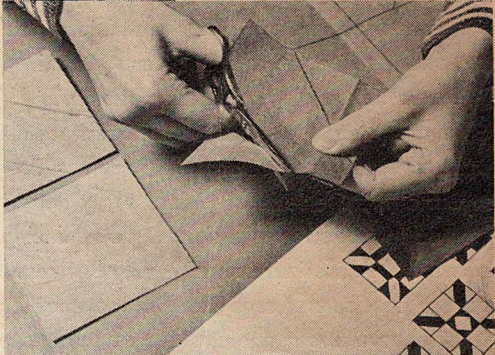


1

10



If you can sew, you can quilt. That's because quilting is just sewing layers of material together. It's fun, but the treasured results are the greatest joy. So run through the steps here, then gather your materials, and start quilting now.

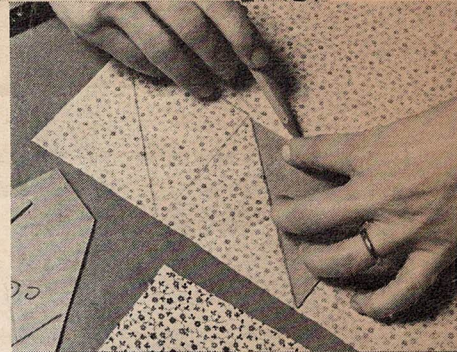


2

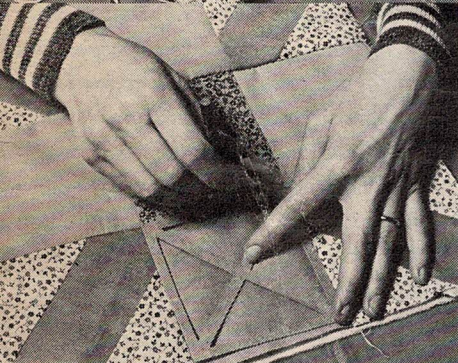
9



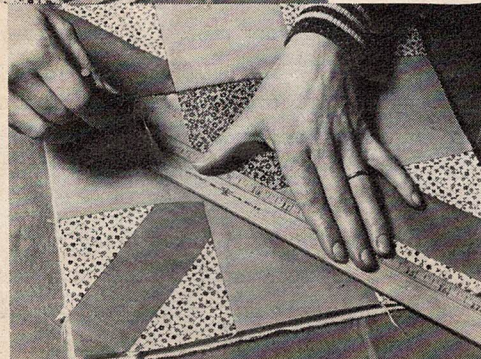
1 Pick a quilt or pillow pattern from a book or kit. Draw the design to scale on cardboard. 2 Cut pattern pieces from the cardboard. 3 Arrange cut-outs on the wrong side of each fabric in line with the grain. Trace pieces onto fabrics with pencil; cut them out. 4 Join pieced sections to form individual squares by pinning outside pieces to center piece, right sides together. Sew pieces together leaving a 1/4" seam allowance. 5 Assemble squares into rows, sewing three squares together to make one row. Then sew each row together to form a block, lining up seams evenly. Press seams closed, all in one direction. 6 Layer quilting squares—backing, middle fabric or batting (a filler for thickness), and top block. Baste all together, forming an X across the top, then sewing along the edges. 7 & 8 Mark your quilting stitch design across top of block in light, broken pencil lines, using a ruler or pre-cut quilt design. Stop 1/2" in from edges. 9 Quilt layers together with a small, running stitch. 10 Trim border with fabric strips.



3



8



Make your first quilting project a pillow or place mat—something that gets you off to a fast finish. Copy your design from a book of patchwork patterns or make up your own—filling it in with crayons to find a color scheme.



4

7

- ◆ Quilt with hand stitches, making no fewer than six per inch.
- ◆ Use white thread that shows.
- ◆ Tie thread knots small enough to pull through back, catch inside.
- ◆ Keep stitches on bottom as neat as on top for reversible quilts.
- ◆ Sew stitches loose enough to avoid pulling fabric out of shape.



5

6